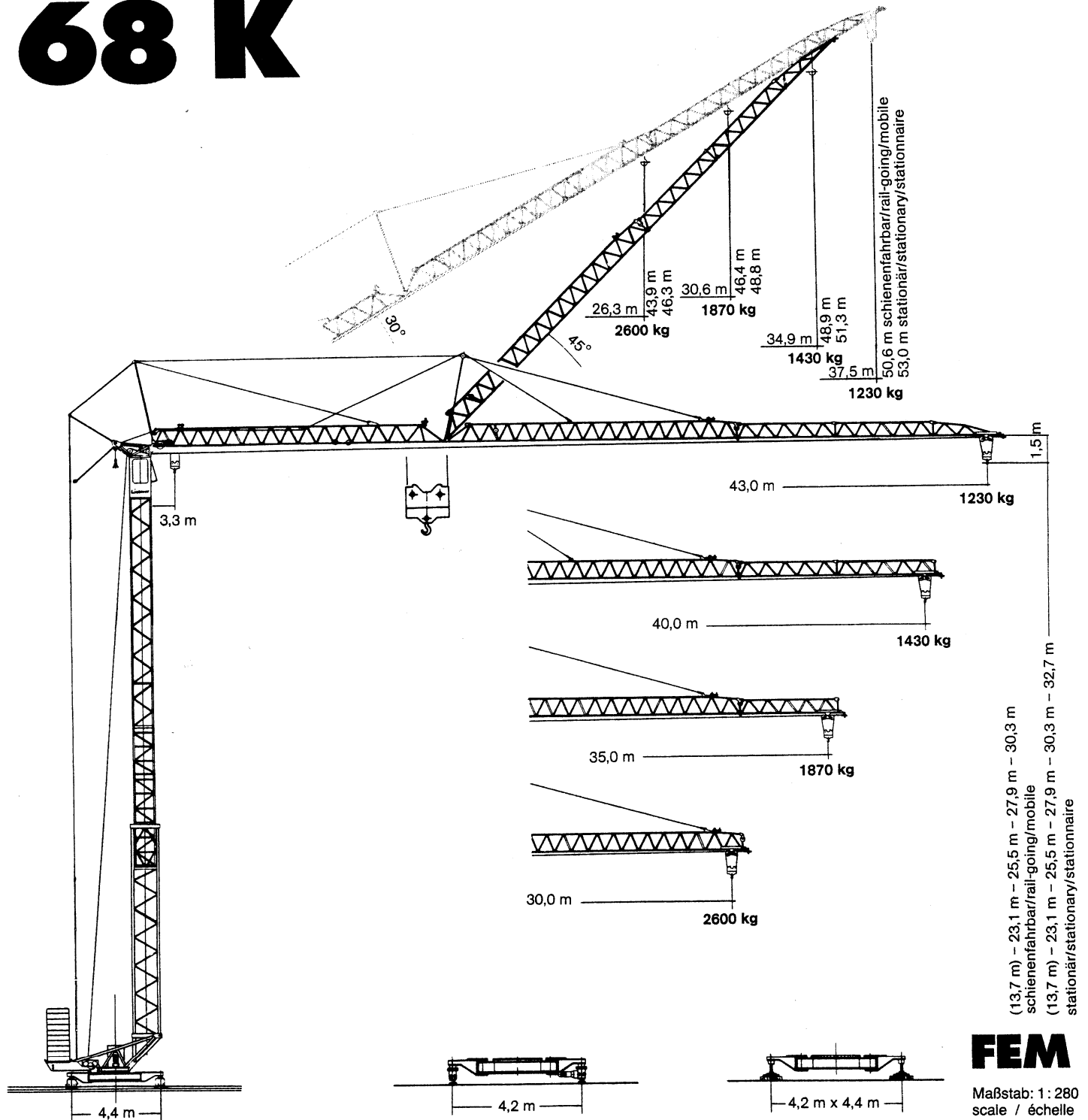
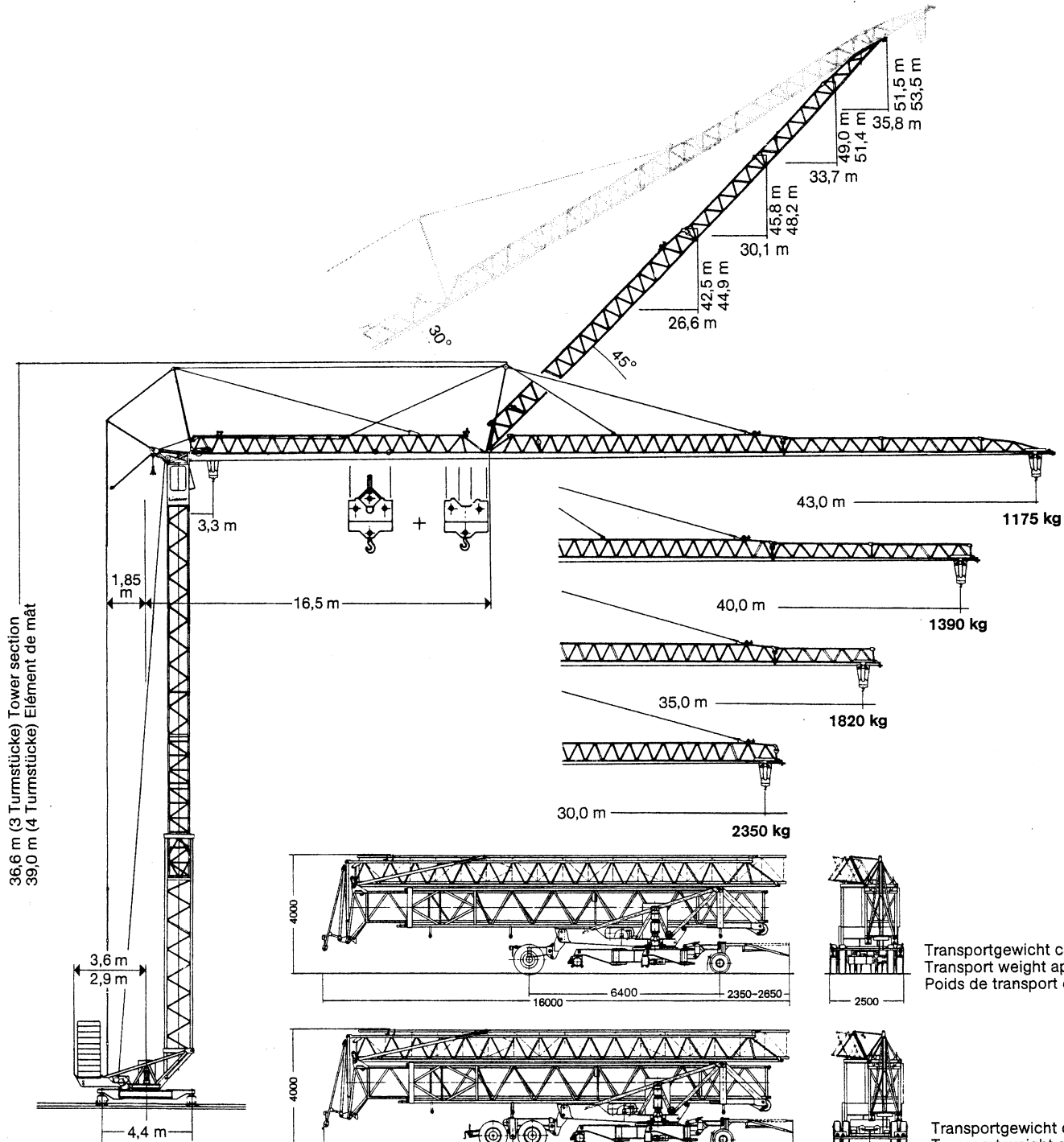


**Tower Crane
Grue à tour**

Turmdrehkran 68 K



LIEBHERR



Gewicht

Weight

Poids

Max. Eckkraft in Betrieb Max. corner pressure in operation Réaction maxi. par angle en service	298 kN*
Max. Eckkraft außer Betrieb Max. corner pressure out of operation Réaction maxi. par angle hors service	200 kN*


Gegengewicht ca. Counter weight approx. Contrepoids env.	r = 3,6 m r = 2,9 m	26000 kg 34000 kg
Konstruktionsgewicht (max. Ausladung + Hakenhöhe) ca. Dead weight (max. radius + hook height) approx. Poids de la construction (max. portée + hauteur sous crochet) env.		18800 kg

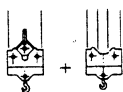
* Umrechnung der Einheiten für Kräfte 1 kp ≈ 10 N; 10 kN ≈ 1 Mp./Conversion of the units for forces./Conversion des unités des forces.

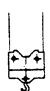
68 K

Ausladung und Tragfähigkeit

Radius and capacity / Portée et charge

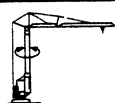
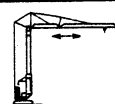
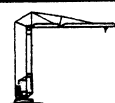

Auslegerlänge Length of jib Longueur de flèche m	max. kg m/kg		m/kg																				
			19,0	20,0	22,0	24,0	26,0	28,0	29,0	30,0	31,0	32,0	33,0	34,0	35,0	36,0	37,0	38,0	39,0	40,0	41,0	42,0	43,0
43,0	3,3-20,6 3050		3050	3050	2810	2530	2290	2090	2010	1925	1850	1780	1710	1650	1590	1540	1490	1440	1390	1350	1310	1270	1230
40,0	3,3-21,7 3050		3050	3050	2960	2670	2420	2210	2030	1960	1880	1810	1750	1690	1630	1580	1520	1480	1430				
35,0	3,3-23,3 3050		3050	3050	3050	2940	2670	2450	2350	2250	2170	2080	2010	1940	1870								
30,0	3,3-26,2 3050		3050	3050	3050	3050	3050	2820	2710	2600													


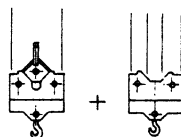
m	max. kg m/kg		m/kg																				
			11,0	12,0	14,0	16,0	18,0	20,0	22,0	24,0	26,0	28,0	30,0	32,0	34,0	35,0	37,0	38,0	39,0	40,0	41,0	42,0	43,0
43,0	3,3-20,6 3000	-12,1 6000	6000	6000	4960	4180	3610	3160	2810	2510	2270	2070	1870	1740	1610	1550	1440	1390	1340	1300	1250	1210	1175
40,0	3,3-21,7 3000	-12,7 6000	6000	6000	5260	4440	3830	3360	2980	2680	2420	2200	2030	1860	1720	1660	1540	1490	1440	1390			
35,0	3,3-23,0 3000	-13,8 6000	6000	6000	5710	4830	4170	3660	3250	2920	2640	2410	2210	2040	1890	1820							
30,0	3,3-25,0 3000	-13,8 6000	6000	6000	5980	5100	4410	3870	3450	3100	2810	2560	2350										

m	max. kg m/kg		Auslegersteilstellung 30° Elevated jib 30° Flèche inclinée 30° m/kg																				
			17,0	18,0	19,0	20,0	21,0	22,0	23,0	24,0	25,0	26,3	27,0	28,0	29,0	30,6	32,0	33,0	34,0	34,9	36,0	37,0	37,5
43,0	3,1-18,1 3050		3050	3050	2870	2700	2540	2400	2270	2150	2050	1925	1860	1780	1700	1590	1510	1450	1400	1350	1300	1250	1230
40,0	3,1-19,0 3050		3050	3050	3030	2850	2680	2530	2400	2280	2170	2030	1970	1880	1800	1690	1600	1540	1480	1430			
35,0	3,1-20,5 3050		3050	3050	3050	3050	2960	2800	2650	2520	2390	2250	2180	2090	2000	1870							
30,0	3,1-23,0 3050		3050	3050	3050	3050	3050	3050	3050	2900	2760	2600											

Geschwindigkeiten

Speeds / Vitesses

	U/min 0 - 0,8 sl./min tr./min	3,0 kW
	20,0 / 40,0 m/min	1,5 / 2,2 kW
	25,0 m/min	2 x 1,5 kW
	0-45° ca. 60 sec.	4,0 kW

Hubwerk Hoist unit Mécanisme de levage	Stufe Step Cran	kg	m/min
15,6 kW 	1	3050	6,5
	2	3050	28,0
	3	1600	53,0
	1	3000 6000	6,5 3,25
	2	3000 6000	28,0 14,0
	3	1600 3200	53,0 26,5

Leitungsquerschnitt bei 380 V
Cross section of cable
Section de câble à

Betriebsspannung 380 V
Operating voltage
Tension de service

bis 99,0 m
up to
jusqu'à

Frequenz 50 Hz
Frequency
Fréquence

Anschlußwert 28,0 kVA
Power requirement
Puissance requise

Technische Daten - Technical data

Caractéristiques techniques

Aufstellvorgang

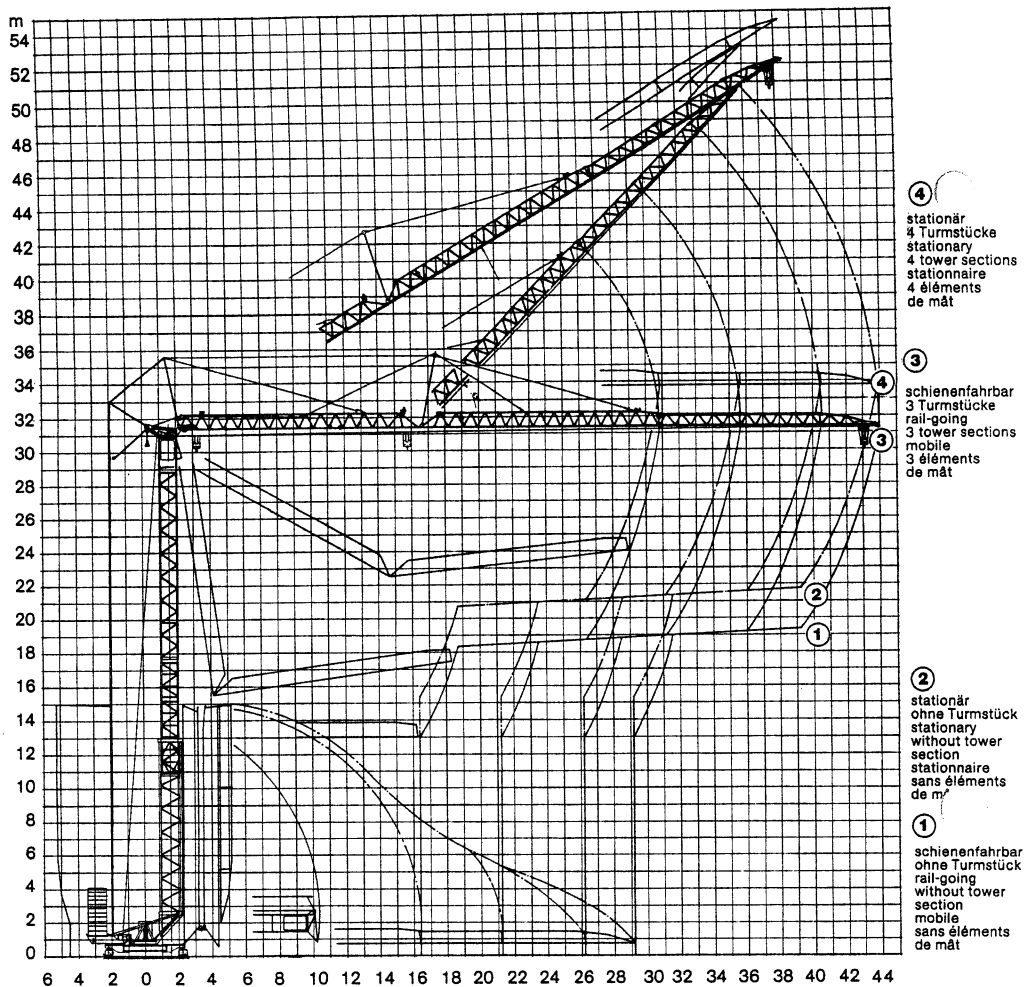
Erection procedure

Déroulement de montage

Ballastierausladung 5,0 m

Ballasting radius 5,0 m

Portée pour dispositif de lestage 5,0 m



Kolli-Liste

Packing List

Liste de colisage

Pos. Item Rep.	Anz. Qty. Qté		L (m)	B (m)	H (m)	kg				
1	3	Turmstück (ohne Turmauflage) Tower section without tower support Élément de mât sans support de mât					2,50	1,10	1,10	450
2	1	Turmstück (mit Turmauflage) Tower section with tower support Élément de mât avec support de mât					2,50	1,10	1,10	550
3	1	Ausleger-Verlängerung 30,0 m – 35,0 m Jib extension Rallonge de la flèche					5,00	1,02	0,80	240
4	1	Ausleger-Verlängerung 35,0 m – 40,0 m Jib extension Rallonge de la flèche					5,10	1,02	0,70	180
5	1	Ausleger-Verlängerung 40,0 m – 43,0 m Jib extension Rallonge de la flèche					3,10	1,02	0,70	95
6	1	Transportachse vorne Tra 100 KY 1 Road transport axle front Essieux de transport avant					3,00	1,13	0,97	680
7	1	Transportachse hinten Tra 120 GY 1 Road transport axle behind Essieux de transport arrière					1,90	2,50	1,05	1200
8	1	Transportachse Tra 200 GZ 3 Road transport axle Essieux de transport					3,10	2,50	1,10	2500
9	1	Kiste mit Seilen und Kleinteilen Case with ropes and small parts Caisse avec câbles et pièces détachées					1,00	0,80	1,00	450

Datenblatt Nr. 120 P – 2502 FEM (Section 1) – Gruppe 3 • 04.94
Data sheet / Feuille de caractéristiques

Konstruktionsänderungen vorbehalten!
Subject to alterations! / Sous réserves de modifications!

Printed in Germany

Nehmen Sie Kontakt auf mit
Contact

Mettez-vous en rapport avec

LIEBHERR-WERK BIBERACH GMBH, Postfach 1663, D-88396 Biberach an der Riß

☎ (07351) 41-0, Fax (07351) 41225, Tx 71802