

**Tower Crane
Grue à tour**

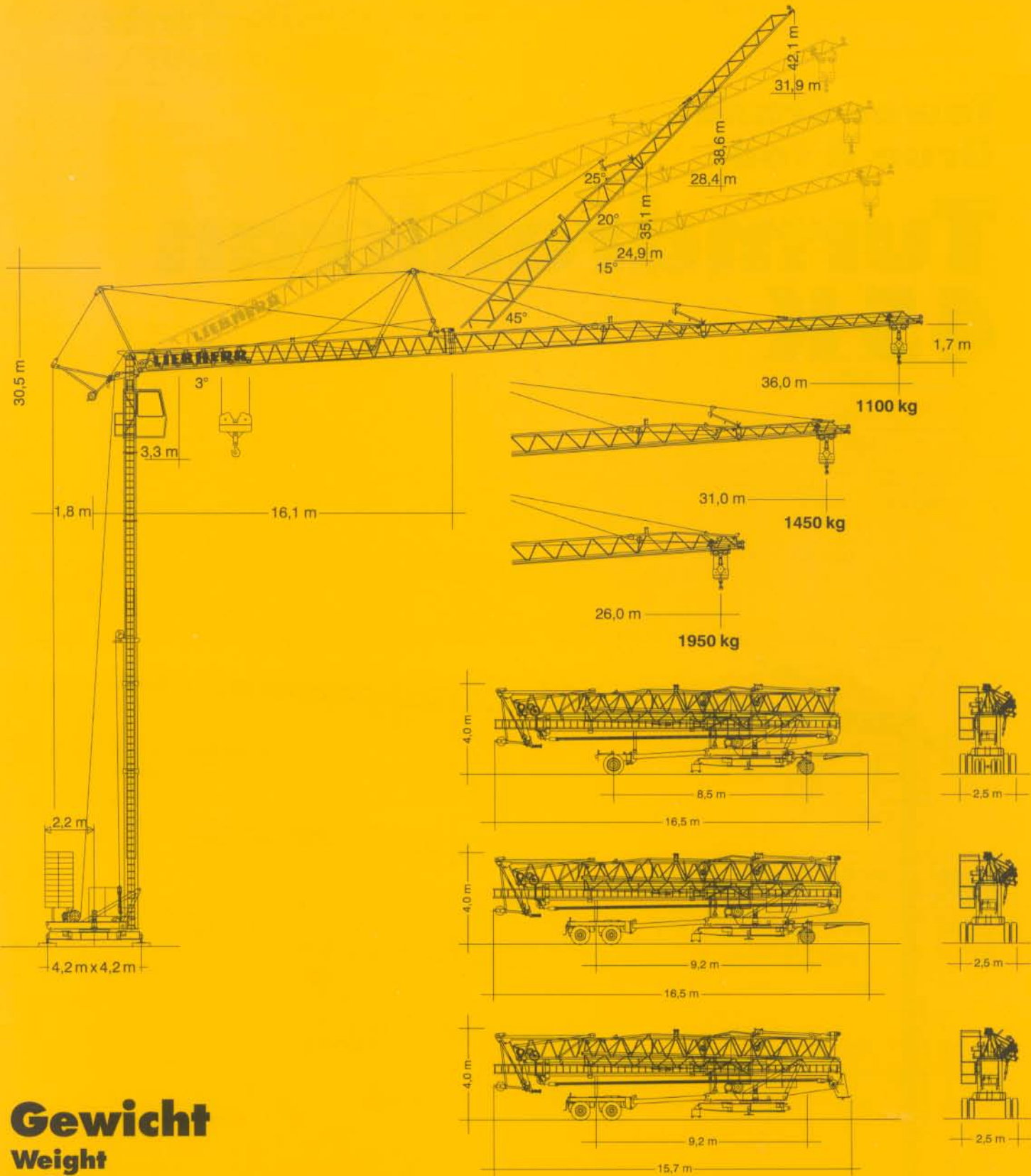
Turmdrehkran 45 K



DIN

Maßstab 1 : 200
scale / échelle

LIEBHERR



Gewicht

Weight

Poids


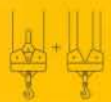
| | | | | |
|--|------------------------|----------------------|--|----------|
| Zentralballast Central ballast weight Lest de base | | | Konstruktionsgewicht ca. Dead weight approx. Poids de la construction env. | 18141 kg |
| Gegengewicht Counterweight Contrepoids | r = 3,0 m r = 2,2 m | 27000 kg 30000 kg | | |

* Umrechnung der Einheiten für Kräfte 1 kp ≈ 10 N; 10 kN ≈ 1 Mp. / Conversion of the units for forces. / Conversion des unités des forces.

45 K


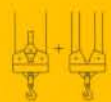
Ausladung und Tragfähigkeit, r = 3,0 m

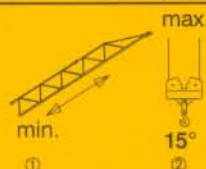
Radius and capacity / Portée et charge

| Auslegerlänge Length of jib Longueur de flèche m | max. kg m / kg |  | m/kg | | | | | | | | | | | |
|---|--------------------|---|------|------|------|------|------|------|------|------|------|------|------|------|
| | | | 12,0 | 14,0 | 16,0 | 18,0 | 20,0 | 22,0 | 24,0 | 26,0 | 28,0 | 31,0 | 34,0 | 36,0 |
| 36,0 | 3,3 - 26,1 2000 | | 2000 | 2000 | 2000 | 2000 | 2000 | 2000 | 2000 | 2000 | 1840 | 1620 | 1450 | 1350 |
| 31,0 | 3,3 - 27,1 2000 | | 2000 | 2000 | 2000 | 2000 | 2000 | 2000 | 2000 | 2000 | 1920 | 1700 | | |
| 26,0 | 3,3 - 26,0 2000 | | 2000 | 2000 | 2000 | 2000 | 2000 | 2000 | 2000 | 2000 | | | | |
| m | max. kg m / kg |  | m/kg | | | | | | | | | | | |
| | | | 12,0 | 14,0 | 16,0 | 18,0 | 20,0 | 22,0 | 24,0 | 26,0 | 28,0 | 31,0 | 34,0 | 36,0 |
| 36,0 | 3,3 - 14,5 4000 | - 25,1 2000 | 4000 | 4000 | 3520 | 3040 | 2660 | 2360 | 2120 | 1910 | 1740 | 1520 | 1350 | 1250 |
| 31,0 | 3,3 - 15,0 4000 | - 26,0 2000 | 4000 | 4000 | 3680 | 3180 | 2790 | 2470 | 2220 | 2000 | 1820 | 1600 | | |
| 26,0 | 3,3 - 15,5 4000 | - 26,0 2000 | 4000 | 4000 | 3850 | 3320 | 2920 | 2590 | 2320 | 2100 | | | | |

Ausladung und Tragfähigkeit, r = 2,2 m

Radius and capacity / Portée et charge

| Auslegerlänge Length of jib Longueur de flèche m | max. kg m / kg |  | m/kg | | | | | | | | | | | |
|---|--------------------|---|------|------|------|------|------|------|------|------|------|------|------|------|
| | | | 12,0 | 14,0 | 16,0 | 18,0 | 20,0 | 22,0 | 24,0 | 26,0 | 28,0 | 31,0 | 34,0 | 36,0 |
| 36,0 | 3,3 - 22,3 2000 | | 2000 | 2000 | 2000 | 2000 | 2000 | 2000 | 1830 | 1660 | 1510 | 1330 | 1180 | 1100 |
| 31,0 | 3,3 - 23,9 2000 | | 2000 | 2000 | 2000 | 2000 | 2000 | 2000 | 1990 | 1800 | 1650 | 1450 | | |
| 26,0 | 3,3 - 25,5 2000 | | 2000 | 2000 | 2000 | 2000 | 2000 | 2000 | 2000 | 1950 | | | | |
| m | max. kg m / kg |  | m/kg | | | | | | | | | | | |
| | | | 12,0 | 14,0 | 16,0 | 18,0 | 20,0 | 22,0 | 24,0 | 26,0 | 28,0 | 31,0 | 34,0 | 36,0 |
| 36,0 | 3,3 - 12,5 4000 | - 21,4 2000 | 4000 | 3460 | 2910 | 2510 | 2190 | 1940 | 1730 | 1560 | 1410 | 1230 | 1080 | 1000 |
| 31,0 | 3,3 - 13,3 4000 | - 22,9 2000 | 4000 | 3750 | 3160 | 2720 | 2380 | 2110 | 1890 | 1700 | 1550 | 1350 | | |
| 26,0 | 3,3 - 14,1 4000 | - 24,5 2000 | 4000 | 4000 | 3420 | 2950 | 2580 | 2290 | 2050 | 1850 | | | | |



**r = 2,2 m und 3,0 m
and
et**

① Max. Hakenhöhe
Max. hoisting height
Hauteur sous crochet max.

② Max. Ausladung
Max. radius
Portée max.

③ Tragfähigkeit
Capacity
Charge

| | 15° | | | 20° | | | 25° | | |
|------|------|------------|------|------|------------|-----|------|------------|-----|
| | ① | ② | ③ | ① | ② | ③ | ① | ② | ③ |
| 36,0 | 32,7 | 3,2 - 34,9 | 1000 | 35,6 | 3,1 - 34,0 | 700 | 38,5 | 3,0 - 32,9 | 500 |
| 31,0 | 31,5 | 3,2 - 30,0 | 1000 | 33,9 | 3,1 - 29,1 | 700 | 36,3 | 3,0 - 28,0 | 500 |
| 26,0 | 30,2 | 3,2 - 25,1 | 1000 | 32,3 | 3,1 - 24,4 | 700 | 34,3 | 3,0 - 23,5 | 500 |

Technische Daten - Technical data

Caractéristiques techniques

Geschwindigkeiten

Speeds / Vitesses

| | | |
|--|-------------------------------------|------------|
| | U/min 0 ↔ 0,8 sl./min tr./min | 3,0 kW |
| | 0 ↔ 40,0 m/min | 2,8 kW |
| | 25,0 m/min | 2 x 1,5 kW |
| | 0 – 45° ca. 105 sec. | 2,8 kW |

| Hubwerk Hoist unit Mécanisme de levage | Stufe Step Cran | kg | m/min |
|--|-----------------------|--------------|--------------|
| 11,0 kW | 1 | 2000 | 6,0 |
| | 2 | 2000 | 25,0 |
| | 3 | 1000 | 50,0 |
| 11,0 kW | 1 | 2000 4000 | 6,0 3,0 |
| | 2 | 2000 4000 | 25,0 12,5 |
| | 3 | 1000 2000 | 50,0 25,0 |
| 11,0 kW, FU* | 1 | 2000 4000 | 3,0 1,5 |
| | 2 | 2000 4000 | 30,0 15,0 |
| | 3 | 1500 3000 | 40,0 20,0 |
| | 4 | 1000 2000 | 55,0 27,5 |

Leitungsquerschnitt bei 380 V bis 48,0 m 4 x 6 mm²
Cross section of cable up to 87,0 m* 4 x 6 mm²
Section de câble à jusqu'à

Betriebsspannung 380 V
Operating voltage
Tension de service

Frequenz 50 Hz
Frequency
Fréquence

Anschlußwerte
Power requirement
Puissance requise

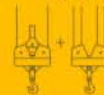
22,0 kVA
15,0 kVA*

Technische Kenngröße nach BGL

Technical nominal size according to the construction machinery list (BGL)
Grandeur caractéristique suivant le barème d'emploi des appareils (BGL)



2108-0050



2108-0050

Kolli-Liste

Packing List

Liste de colisage

| Pos. Item Rep. | Anz. Qty Qte | | | | L (m) | B (m) | H (m) | kg |
|----------------------|--------------------|---|--|--|-------|-------|-------|------|
| 1 | 1 | Ausleger-Verlängerung 25,5 m – 30,0 m Jib extension Rallonge de la flèche | | | 0,49 | 0,82 | 0,66 | 200 |
| 2 | 1 | Ausleger-Verlängerung 31,0 m – 36,0 m Jib extension Rallonge de la flèche | | | 5,45 | 0,82 | 0,58 | 150 |
| 3 | 1 | Transportachse vorne Tra 100 KY 6 Road transport axle front Essieux de transport avant | | | 3,00 | 1,13 | 0,97 | 660 |
| 4 | 1 | Transportachse hinten Tra 120 GY 1 A Road transport axle behind Essieux de transport arrière | | | 1,90 | 2,50 | 1,05 | 1150 |
| 5 | 1 | Transportachse Tra 200 GZ 1 Road transport axle Essieux de transport | | | 3,10 | 2,50 | 1,10 | 2600 |
| 6 | 1 | Kiste mit Seilen und Kleinteilen Case with ropes and small parts Caisse avec câbles et pièces détachées | | | 1,00 | 0,80 | 1,00 | 450 |

Datenblatt Nr. 120 P – 3257 H 1 B 3 DIN 15018 und OENORM T 3 • BGL 2108-0050 • 04.94

Data sheet

Feuille de caractéristiques

Konstruktionsänderungen vorbehalten!
Subject to alterations!
Sous réserves de modifications!

Printed in Germany

Nehmen Sie Kontakt auf mit
Contact

Mettez-vous en rapport avec

LIEBHERR-WERK BIBERACH GMBH, Postfach 1633, D-88396 Biberach an der Riß

☎ (07351) 41-0, Fax (07351) 41225, Tx 71802