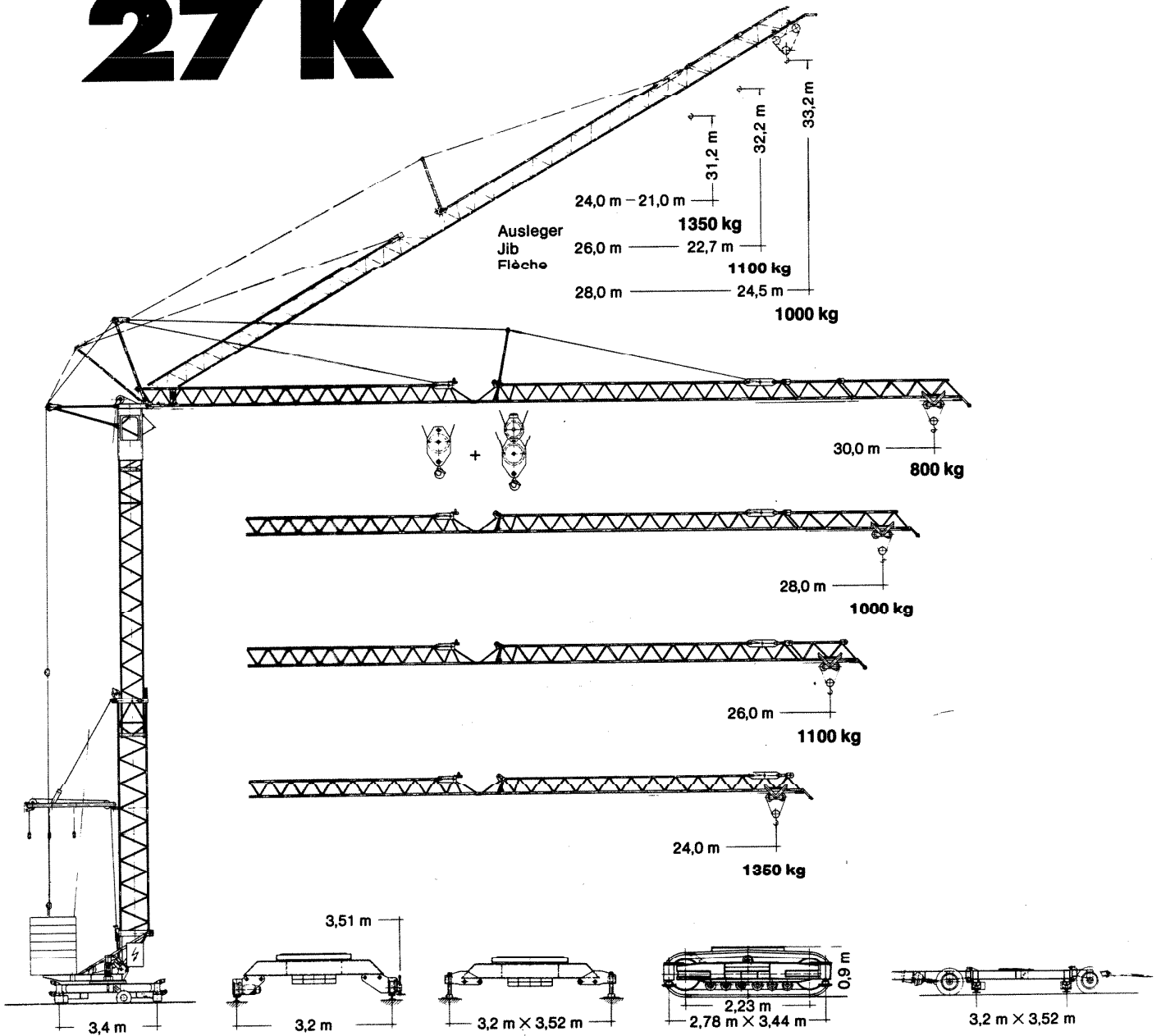
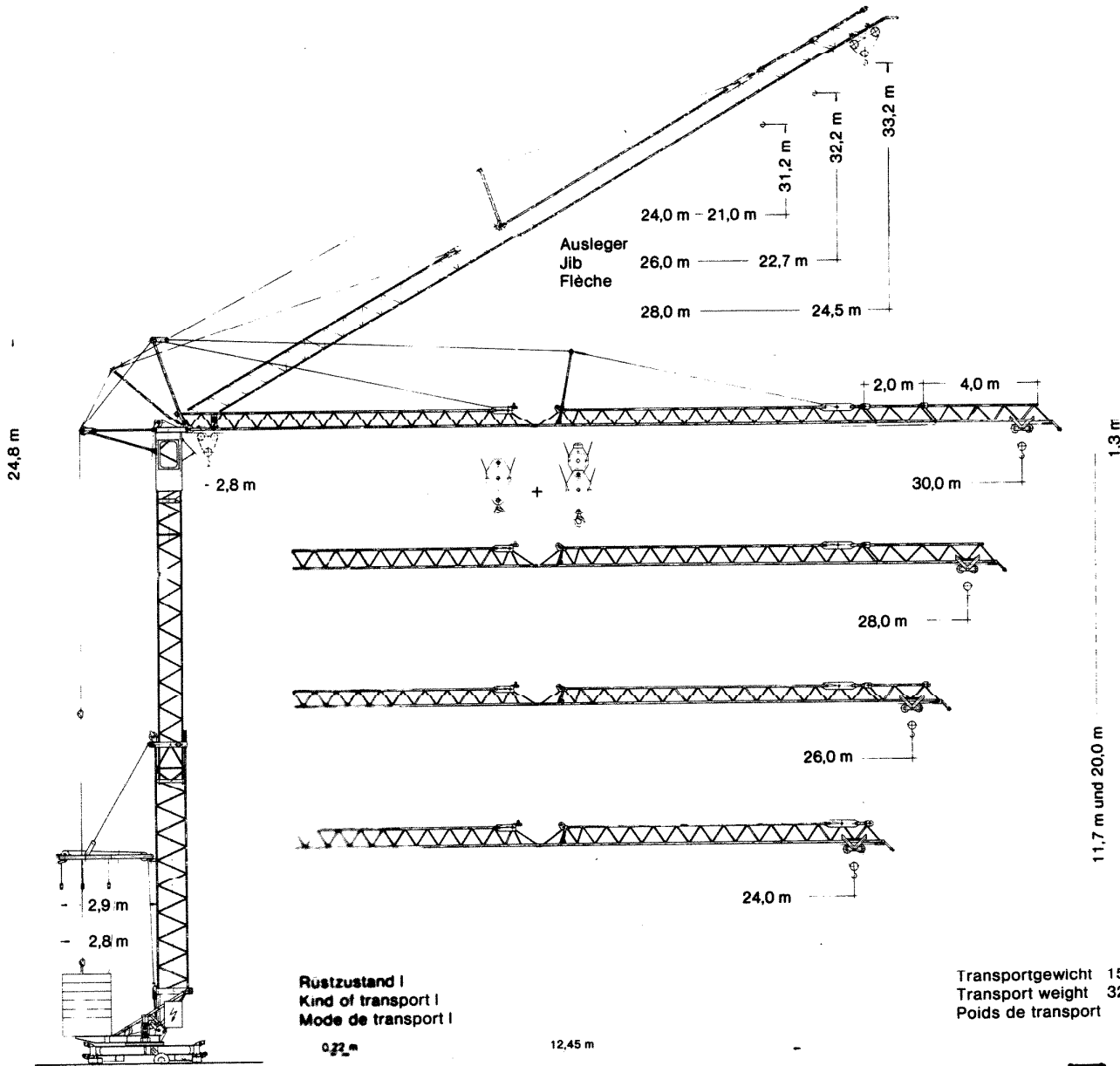


**Tower Crane
Grue à tour**

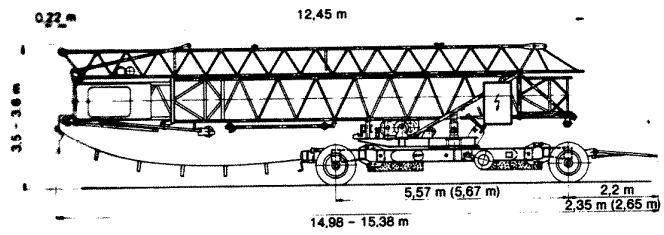
Turmdrehkran 27 K



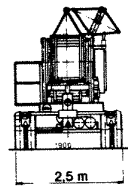
LIEBHERR



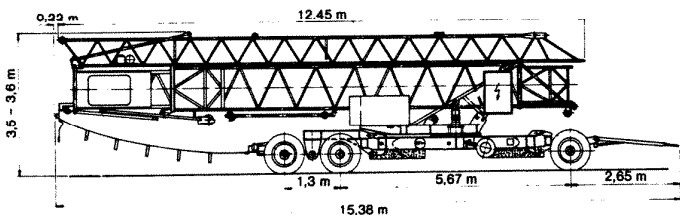
Rüstzustand I
Kind of transport I
Mode de transport I



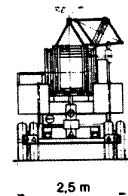
Transportgewicht 15000 kg
Transport weight 32000 lbs
Poids de transport



Rüstzustand II
Kind of transport II
Mode de transport II



Transportgewicht 19000 kg
Transport weight 41600 lbs
Poids de transport



27 K

Gewicht

Weight

Poids

| | |
|---|-----------------------|
| Max. Ecklast in Betrieb Max. corner pressure in operation Réaction max. par angle en service | 17251 kg 38038 lbs |
| Max. Ecklast außer Betrieb Max. corner pressure out of operation Réaction max. par angle hors service | 10272 kg 22650 lbs |
| Zentralballast ca. Central ballast approx. Lest-fixe de chassis env. | 2600 kg 5720 lbs |

| | |
|---|-----------------------|
| Gegengewicht ca. Counter weight approx. Contrepoids env. | 14000 kg 30870 lbs |
| Konstruktionsgewicht Dead weight Poide de la construction | 9850 kg 21720 lbs |

Ausladung und Traglast

Radius and capacity

Portée et charge

| Auslegerlänge Length of jib Longueur de flèche | Max. Traglast Max. capacity Charge max. | Max. Traglast Max. capacity Charge max. | m ft | Ausladung und Traglast Radius and capacity Portée et charge | | | | | | | |
|--|---|---|-----------|---|--------------|--------------|--------------|--------------|--------------|--------------|--------------|
| | | | | 16,0 52.5 | 18,0 59.0 | 20,0 65.6 | 22,0 72.2 | 24,0 78.7 | 26,0 85.3 | 28,0 91.8 | 30,0 98.4 |
| 30,0 m/98.4 ft | 2,8 – 18,0 m 9.2 – 59.0 ft 1500 kg/3300 lbs | 2,8 – 10,2 m 9.2 – 33.4 ft 3000 kg/6600 lbs | kg lbs | 1730 3806 | 1500 3300 | 1320 2904 | 1175 2585 | 1055 2320 | 955 2100 | 870 1914 | 800 1760 |
| 28,0 m/91.8 ft | 2,8 – 20,0 m 9.2 – 65.6 ft 1500 kg/3300 lbs | 2,8 – 11,3 m 9.2 – 37.0 ft 3000 kg/6600 lbs | kg lbs | 1965 4323 | 1705 3750 | 1500 3300 | 1340 2948 | 1205 2651 | 1095 2409 | 1000 2200 | |
| 26,0 m/85.3 ft | 2,8 – 20,1 m 9.2 – 65.9 ft 1500 kg/3300 lbs | 2,8 – 11,3 m 9.2 – 37.0 ft 3000 kg/6600 lbs | kg lbs | 1975 4345 | 1715 3773 | 1510 3322 | 1345 2959 | 1210 2662 | 1100 2420 | | |
| 24,0 m/78.7 ft | 2,8 – 22,0 m 9.2 – 72.2 ft 1500 kg/3300 lbs | 2,8 – 12,3 m 9.2 – 40.3 ft 3000 kg/6600 lbs | kg lbs | 2185 4807 | 1900 4180 | 1675 3685 | 1500 3300 | 1350 2970 | | | |

Geschwindigkeiten

Speeds

Vitesses

| | | |
|--|---------------------------------------|----------------------------|
| | U/min 0–1 sl./min tr./mn | 2,2 kW/3.0 HP |
| | 18,0/ 36,0 m/min 59,0/118,0 ft/min | 1,0/1,45 kW 1.36/2.0 HP |
| | 25,0 m/min 82,0 ft/min | 2 x 1,5 kW/2 x 2.0 HP |

| Hubwerk Hoist gear Mécanisme de levage | Gang Gear Boite | kg | m/min | lbs | ft/min |
|--|-----------------------|------|-------|------|--------|
| | 1 | 1500 | 6,0 | 3300 | 20,0 |
| | 2 | 1500 | 27,0 | 3300 | 88.6 |
| | 3 | 1000 | 55,0 | 2200 | 180.0 |
| | 1 | 3000 | 3,0 | 6600 | 10.0 |
| | 2 | 3000 | 13.5 | 6600 | 44.3 |
| | 3 | 2000 | 27,0 | 4400 | 88.6 |

Kabelquerschnitt bei 380 V
Cross section of cable 380 V
Section of câble à 380 V

Betriebsspannung
Operating voltage
Tension de service

380 V

bis 20,0 m
up to 65.0 ft
jusqu'à 20,0 m

Frequenz
Frequency
Fréquence

4 x 6 mm²

4 x 0.0093 sq. inch

50 Hz

bis 28,0 m
up to 92.0 ft
jusqu'à 28,0 m

Gesamtmotorenleistung
Total motor output
Puissance totale des moteurs

4 x 10 mm²

4 x 0.015 sq. inch

16,4 kW

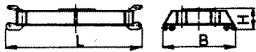
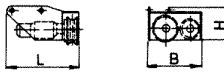
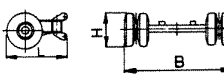
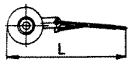
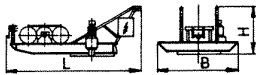
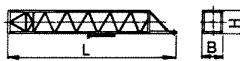
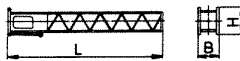
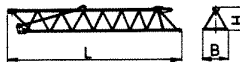


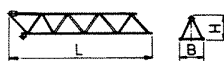
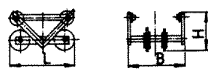
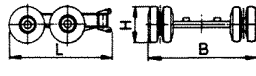
22.3 HP

Technische Daten - Technical data

Caractéristiques techniques

Kolli-Liste

Packing List Liste de colisage

| Pos. Item Rep. | Anzahl Quantity Qté | Benennung Description Désignation | | Länge m Length ft Longueur m | Breite m Width ft Largeur m | Höhe m Height ft Hauteur m | Einzelgew. kg Unit weight lbs Poids unitaire kg | Gesamtgew. kg Total weight lbs Poids total kg |
|----------------------|---------------------------|---|---|------------------------------------|-----------------------------------|----------------------------------|---|---|
| 1 | 1 | Unterwagen kompl. Undercarriage compl. Chassis complet |  | 4,2 13.8 | 2,5 8.2 | 0,55 1.8 | | 1800 3960 |
| 2 | 4 | Fahrwerke Travelling gears Mécanismes de translation |  | 0,95 3.12 | 0,65 2.13 | 0,4 1.31 | 2 x 240 2 x 528 | 800 1760 |
| | | angetrieben | | | | | | |
| | | nicht angetrieben | | | | | | |
| 3 | 1 | Transportachse hinten Road transport axle behind Essieux de transport arrière |  | 1,3 4.26 | 2,5 8.2 | 1,0 3.28 | 1150 2535 | 1870 4125 |
| 4 | 1 | Transportachse vorne Road transport axle front Essieux de transport avant |  | 2,3 7.54 | 2,1 6.89 | 1,0 3.28 | 720 1590 | |
| 5 | 1 | Drehbühne kompl. Revolving platform compl. Plate-forme tournante complète |  | 4,0 13.1 | 1,6 5.25 | 1,8 5.9 | | 2050 4510 |
| 6 | 1 | Turm-Unterteil Tower (lower part) Tour inférieure |  | 10,0 32.8 | 1,0 3.28 | 1,3 4.27 | | 1650 3630 |
| 7 | 1 | Turm-Oberteil Tower (upper part) Tour supérieure |  | 12,4 40.6 | 0,95 3.12 | 1,2 3.94 | | 1560 3432 |
| 8 | 1 | Ausleger-Anlenkstück Jib pivoting section Élément de pied de flèche |  | 12,3 40.35 | 1,1 3.6 | 0,8 2.62 | | 800 1760 |
| 9 | 1 | Ausleger-Kopfstück Jib head piece Pointe de flèche |  | 11,7 38.4 | 0,8 2.62 | 0,75 2.46 | | 320 704 |
| 10 | 1 | Ausleger-Verlängerung 2,0 m Jib extension Rallonge de la flèche |  | 2,5 6.56 | 0,8 2.62 | 0,7 2.3 | 2 x 60 2 x 132 | 65 143 |
| 11 | 1 | Ausleger-Verlängerung 4,0 m Jib extension Rallonge de la flèche |  | 4,5 14.7 | 0,88 2.62 | 0,7 2.3 | 1 x 115 1 x 253 | 115 253 |
| 12 | 1 | Laufkatze kompl. Trolley compl. Chariot distributeur compl. |  | 0,9 2.95 | 0,95 3.12 | 0,6 1.97 | | 100 220 |
| 13 | 1 | Transportachse Tra 200 Road transport axle Tra 200 Essieux de transport Tra 200 |  | 3,1 10.17 | 2,5 8.2 | 2,0 3.28 | | (2600) (5720) |
| 14 | 1 | Kiste mit Seilen und Kleinteilen Case with ropes and small parts Caisse avec câbles et pièces détachées | | 1,0 3.28 | 0,8 2.62 | 1,0 3.28 | | 630 1386 |

Datenblatt Nr. 120 P - 1953 - DIN 15018 H 1 B 3 und OENORM T 3 - 1. 79
Data sheet
Feuille de caractéristiques

Konstruktionsänderungen vorbehalten
Subject to alterations
Sous réserves de modifications

Printed in Fed. Rep. of Germany

Nehmen Sie Kontakt auf mit
Contact

Mettez-vous en rapport avec

LIEBHERR-WERK BIBERACH GMBH, Postfach 620, D-7950 Biberach an der Riß 1,
Telefon (07351) 41-1, Telex 71802