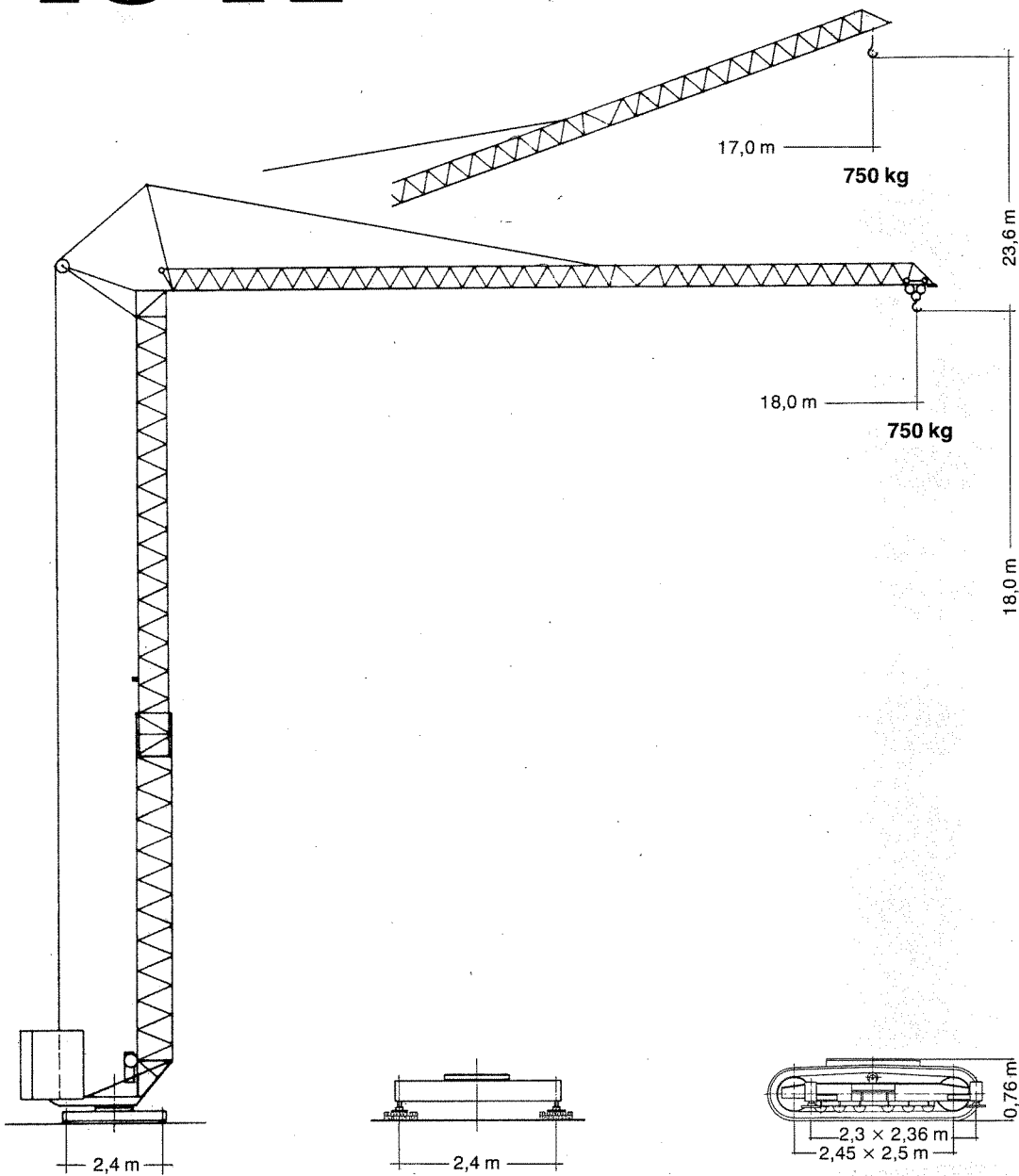
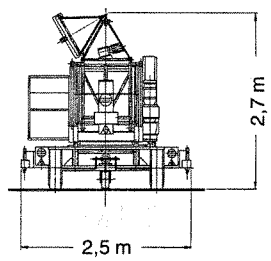
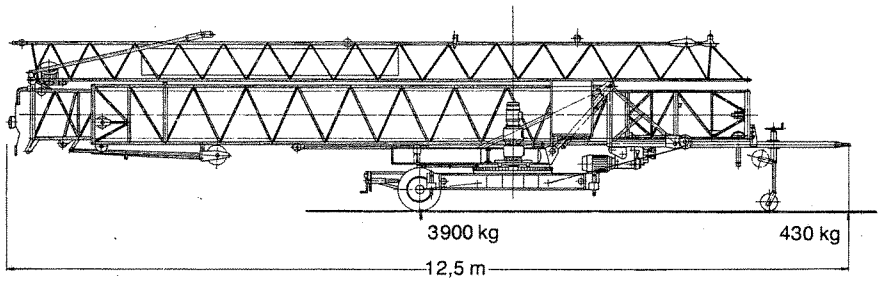
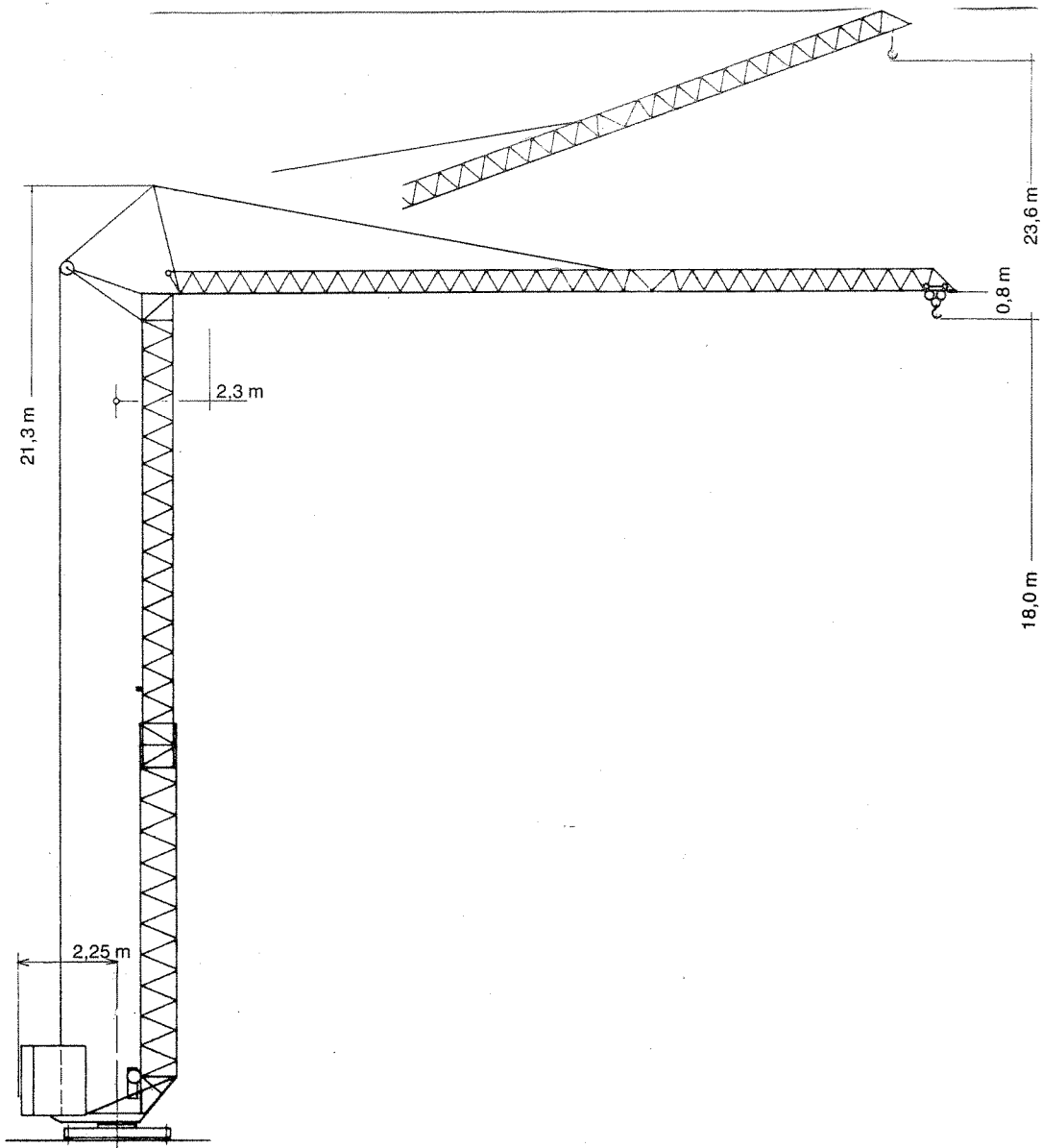


**Tower Crane  
Grue à tour**

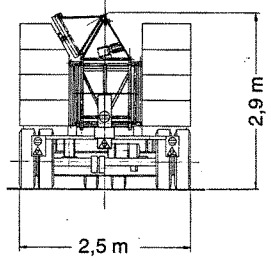
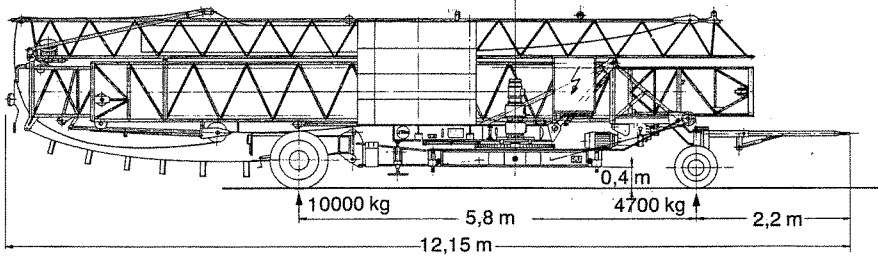
# **Turmdrehkran 13 K**



# **LIEBHERR**



Transportgewicht 4250 kg  
 Transport weight  
 Poids de transport



Transportgewicht 14700 kg  
 Transport weight  
 Poids de transport

**13 K**

# Gewicht

## Weight

## Poids

Max. Eckkraft in Betrieb Max. corner pressure in operation Réaction max. par angle en service	82,5 kN
Zentralballast ca. (nur in Österreich) Central ballast approx. (only in Austria) Lest-fixe de chassis env. (seulement en Autriche)	600 kg

1 kN ≈ 100 kp

Gegengewicht ca. Counter weight approx. Contrepoids env.	8800 kg
Konstruktionsgewicht Dead weight Poids de la construction	3900 kg

# Ausladung und Tragfähigkeit

## Radius and capacity

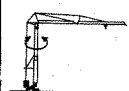
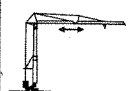
## Portée et charge

Auslegerlänge Length of jib Longueur de flèche	Max. Tragfähigkeit Max. capacity Charge max.	Ausladung und Tragfähigkeit m/kg Radius and capacity Portée et charge						
		12,0	13,0	14,0	15,0	16,0	17,0	18,0
m	m/kg							
18,0	2,3 – 11,7 1250	1220	1110	1010	930	860	800	750

# Geschwindigkeiten

## Speeds

## Vitesses

	U/min 1,0 sl./min tr./mn	1,1 kW
	25,0 m/min	0,75 kW

Hubwerk Hoist gear Mécanisme de levage	Gang Gear Boite	kg	m/min
5,1 kW	1	1250	10,0
	2	750	30,0

Kabelquerschnitt bei 380 V  
Cross section of cable  
Section of câble

Betriebsspannung 380 V  
Operating voltage  
Tension de service

bis 30 m  
up to  
jusqu'à

Frequenz 50 Hz  
Frequency  
Fréquence

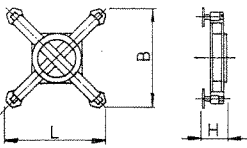
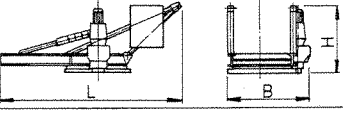
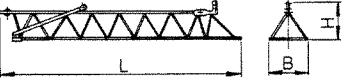
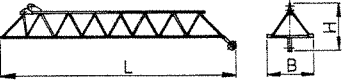
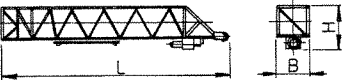
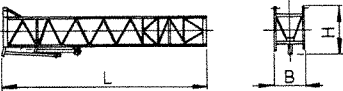
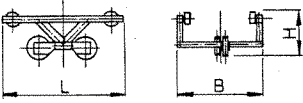

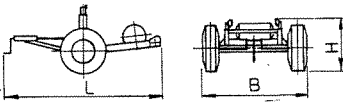
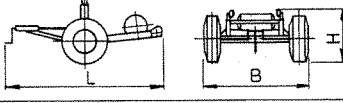
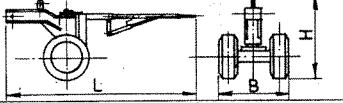
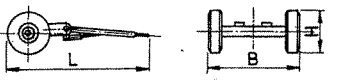
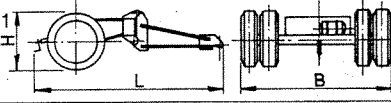
Gesamtmotorenleistung 7,0 kW  
Total motor output  
Puissance totale des moteurs

# Technische Daten - Technical data

# Caractéristiques techniques

# Kolli-Liste

# Packing List Liste de colisage

Pos. Item Rep.	Anzahl Quantity Qté	Benennung Description Désignation		Länge m Length m Longueur m	Breite m Width m Largeur m	Höhe m Height m Hauteur m	Gewicht kg Weight kg Poids kg
1	1	Unterwagen kompl. Undercarriage compl. Chassis compl.		2,65	2,65	0,30	800
2	1	Drehbühne kompl. Revolving platform compl. Plate-forme tournante complète		3,30	1,35	1,30	1000
3	1	Ausleger-Anlenkstück Jib pivoting section Élément de pied de flèche		13,60	0,78	0,74	340
4	1	Ausleger-Kopfstück Jib head piece Pointe de flèche		6,82	0,80	0,94	130
5	1	Turm-Unterteil Tower (lower part) Tour inférieure		8,92	0,98	1,34	600
6	1	Turm-Oberteil Tower (upper part) Tour supérieure		10,67	0,75	1,11	565
7	1	Laufkatze kompl. Trolley compl. Chariot distributeur compl.		0,95	0,72	0,36	30
8	1	Zugdeichsel Drowbar Barre de fraction		2,55	0,26	0,60	95
9	1	Transportachse hinten ungebremst Road transport axle behind not braked Essieux de transport arrière non freiné		1,25	1,70	0,70	172
10	1	Transportachse hinten gebremst Road transport axle behind braked Essieux de transport arrière freiné		1,80	1,70	0,70	257
11	1	Transportachse vorne Tra 50 KW Road transport axle front Essieux de transport avant		2,90	0,70	1,10	480
12	1	Transportachse vorne UL 6 Road transport axle front Essieux de transport avant		2,30	2,10	1,00	720
13	1	Transportachse hinten mit Adapter Tra 120 GY 1, Tra 140 GY 1 Road transport axle behind with adapter Essieux de transport arrière avec adaptateur		3,85	2,50	1,05	1450
14	1	Kiste mit Seilen und Kleinteilen Case with ropes and small parts Caisse avec câbles et pièces détachées		1,00	0,80	0,80	500

Datenblatt Nr. 120 P - 1922 - DIN 15018 und OENORM T 3 - 3. 80  
Data sheet  
Feuille de caractéristiques

Konstruktionsänderungen vorbehalten!  
Subject to alterations!  
Sous réserves de modifications!

Printed in Fed. Rep. of Germany

**Nehmen Sie Kontakt auf mit  
Contact**

**Mettez-vous en rapport avec**

**LIEBHERR-WERK BIBERACH GMBH, Postfach 1663, D-7950 Biberach an der Riss 1,  
Telefon (0735 1) 41-0. Telex 7 1802**